



THREE PAD PARCELS AVAILABLE | FOR GROUND LEASE OR BTS
0.74 ACRES - 1.82 ACRES

9437 Collins Rd
 Jacksonville, FL 32244

SEAN MCGILL
 D - 904.302.6943
 sean@cantrellmorgan.com

TOMMY ELLIS
 D - 904.770.4111
 tommy@cantrellmorgan.com



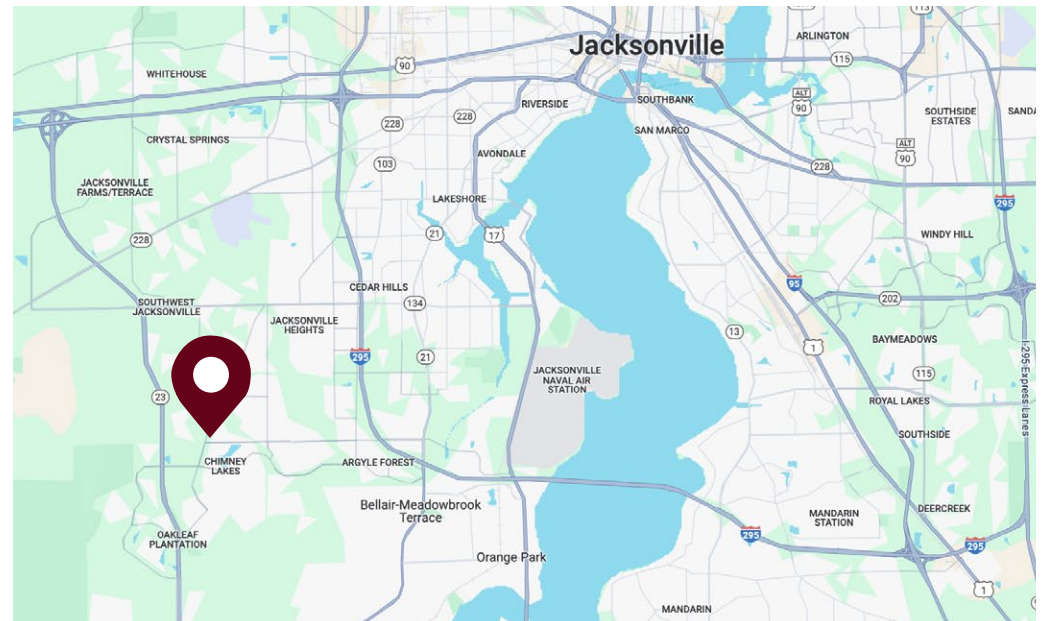
PROPERTY OVERVIEW

PROPERTY HIGHLIGHTS

- Three pad parcels available:
 - 0.74 Acres
 - 0.89 Acres
 - 1.82 Acres
- Pad Parcels graded with utilities stubbed and off-site retention
- Located at the Northeast corner of Old Middleburg & Collins Rd
- Signalized intersection
- Located near the Oakleaf Town Center
- Ideal for Gas C-Stores, QSR's, medical uses, and automotive uses

DEMOGRAPHICS

	3 MILES	5 MILES
Population	62,375	142,593
Households	21,810	51,479
Median Age	36.7	36.3
Median Household Income	\$93,724	\$80,747
Average Household Income	\$105,204	\$93,705



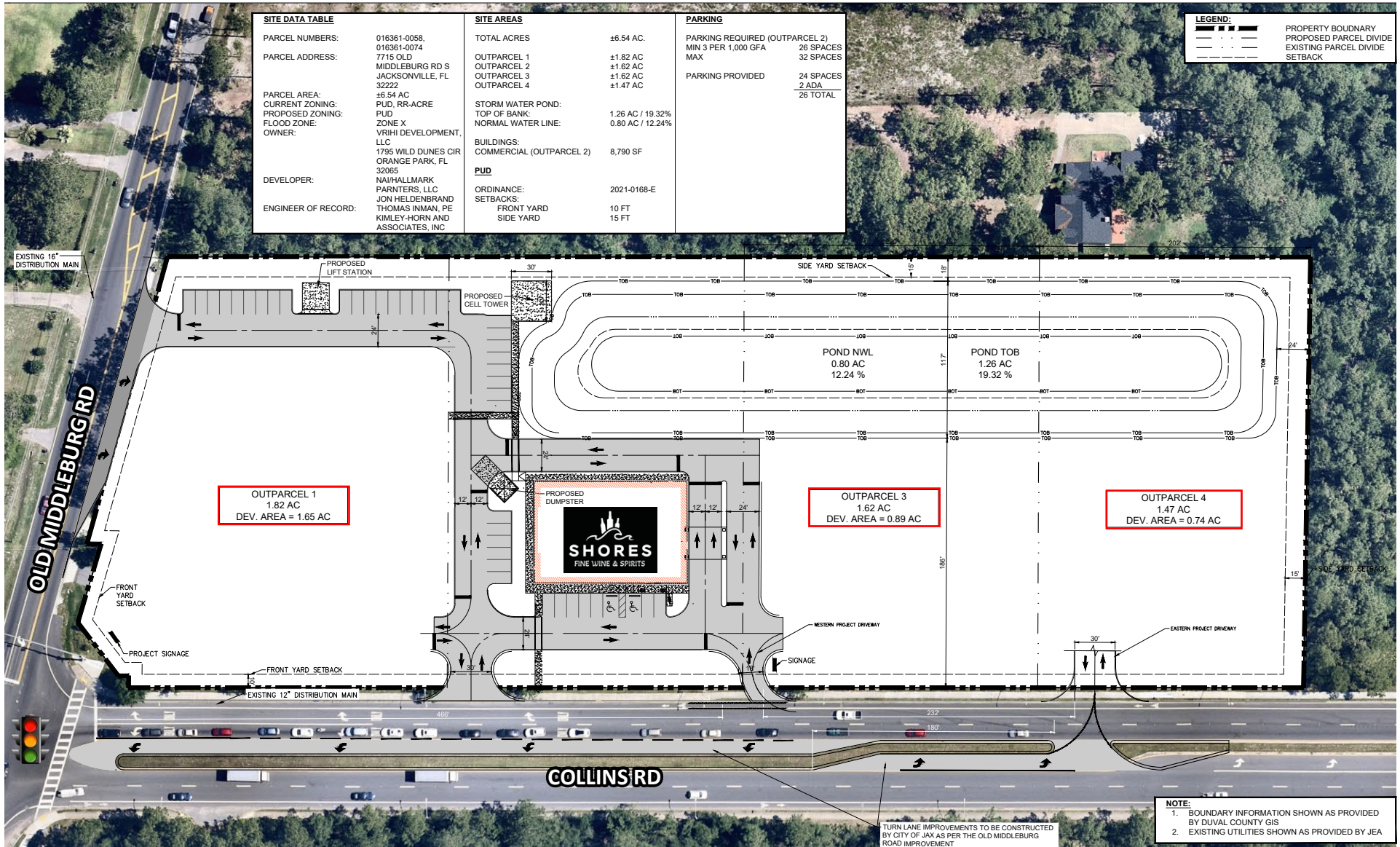
9437 Collins Rd | Jacksonville, FL 32244

SEAN MCGILL
 D - 904.302.6943
 sean@cantrellmorgan.com

TOMMY ELLIS
 D - 904.770.4111
 tommy@cantrellmorgan.com



CONCEPTUAL SITE PLAN



9437 Collins Rd | Jacksonville, FL 32244

SEAN MCGILL
 D - 904.302.6943
 sean@cantrellmorgan.com

TOMMY ELLIS
 D - 904.770.4111
 tommy@cantrellmorgan.com



COLLINS PLAZA



9437 Collins Rd | Jacksonville, FL 32244

SEAN MCGILL
D - 904.302.6943
sean@cantrellmorgan.com

TOMMY ELLIS
D - 904.770.4111
tommy@cantrellmorgan.com

