



PLAZA PALENCIA RETAIL | FOR LEASE

7440 US-1 N
St. Augustine, FL 32095

JACK SLADICK
D - 904.302.6944
C - 239.248.1652
jack@cantrellmorgan.com

KAYLA DEGUZMAN
D - 904.302.6930
M - 904.208.1168
kayla@cantrellmorgan.com



PROPERTY OVERVIEW

This 2,455 SF suite at Plaza Palencia is perfect for retail, office, or service-oriented businesses seeking a strategic location in a rapidly expanding market. Don't miss the opportunity to establish your presence in one of Florida's most dynamic regions.

PROPERTY HIGHLIGHTS

- Prime location near the main entrance of the prestigious Palencia Community.
- Situated in the vibrant corridor between St. Augustine and Nocatee, offering excellent visibility and accessibility.
- Ideal for businesses looking to tap into a thriving market with high consumer traffic.

DEMOGRAPHICS

- Located in Saint Johns County, one of the fastest-growing and most affluent areas in Florida.
- The county boasts one of the highest per capita and median household incomes in the state, offering a strong customer base with significant purchasing power.

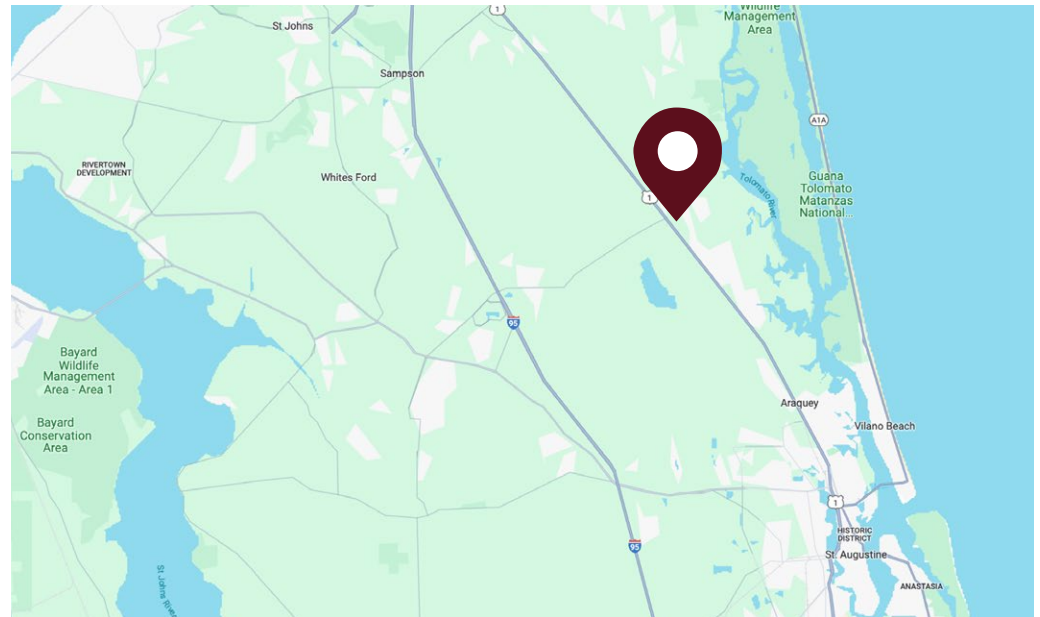
LEASING SUMMARY

Address: 7440 US 1 N, Saint Augustine, FL 32095

Zoning: DRI

LEASE DETAILS

Suite	Size	Lease Price
Suite 104	2,455 SF	\$28/SF + \$6.25/SF NNN



7440 US-1 N | St. Augustine, FL 32095

JACK SLADICK
D - 904.302.6944
C - 239.248.1652
jack@cantrellmorgan.com

KAYLA DEGUZMAN
D - 904.302.6930
M - 904.208.1168
kayla@cantrellmorgan.com



PLAZA PALENCIA



7440 US-1 N | St. Augustine, FL 32095

JACK SLADICK
D - 904.302.6944
C - 239.248.1652
jack@cantrellmorgan.com

KAYLA DEGUZMAN
D - 904.302.6930
M - 904.208.1168
kayla@cantrellmorgan.com



INTERIOR PHOTOS



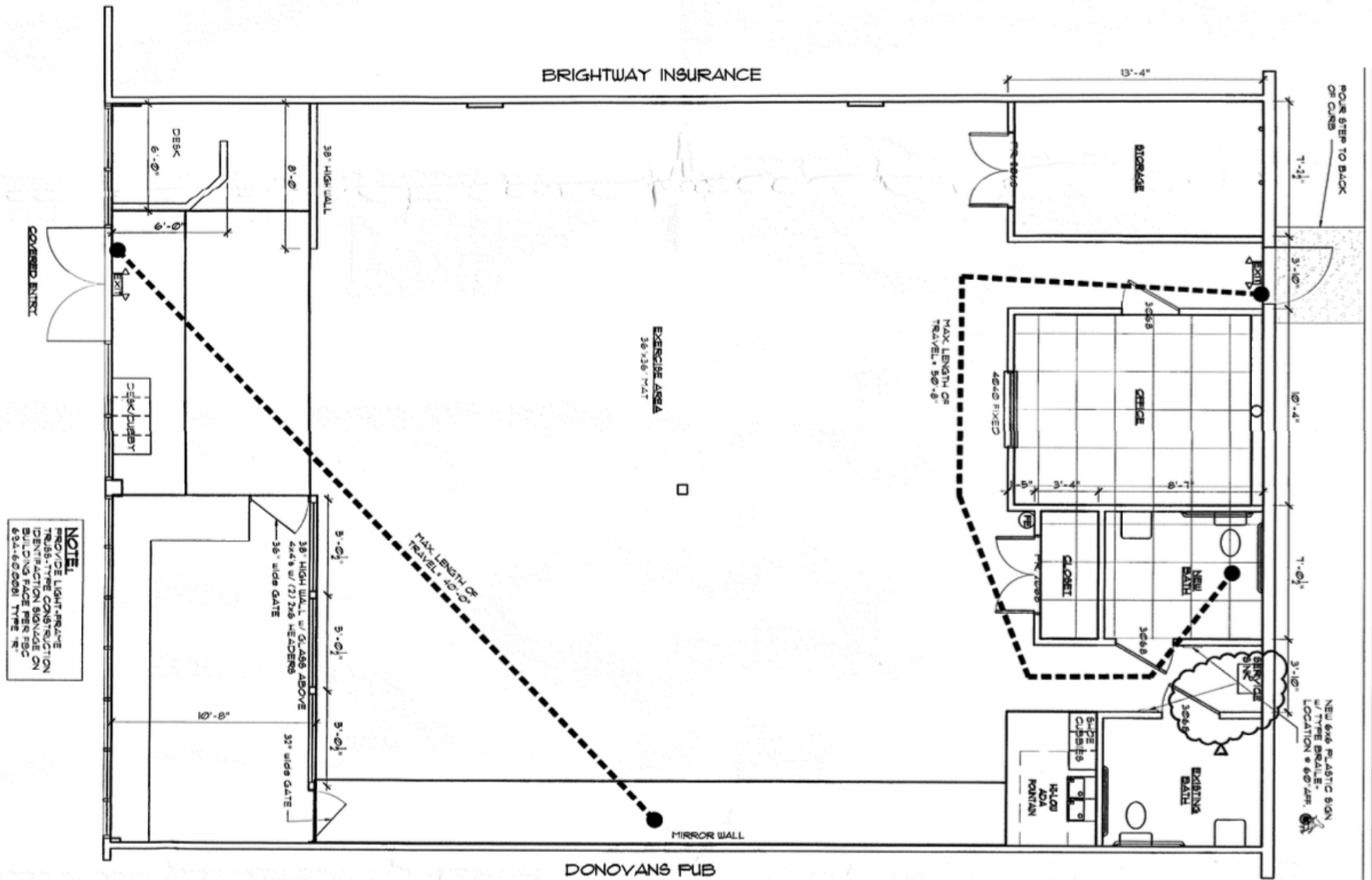
7440 US-1 N | St. Augustine, FL 32095

JACK SLADICK
D - 904.302.6944
C - 239.248.1652
jack@cantrellmorgan.com

KAYLA DEGUZMAN
D - 904.302.6930
M - 904.208.1168
kayla@cantrellmorgan.com



FLOOR PLAN



7440 US-1 N | St. Augustine, FL 32095

JACK SLADICK
 D - 904.302.6944
 C - 239.248.1652
 jack@cantrellmorgan.com

KAYLA DEGUZMAN
 D - 904.302.6930
 M - 904.208.1168
 kayla@cantrellmorgan.com



SURROUNDING AREA



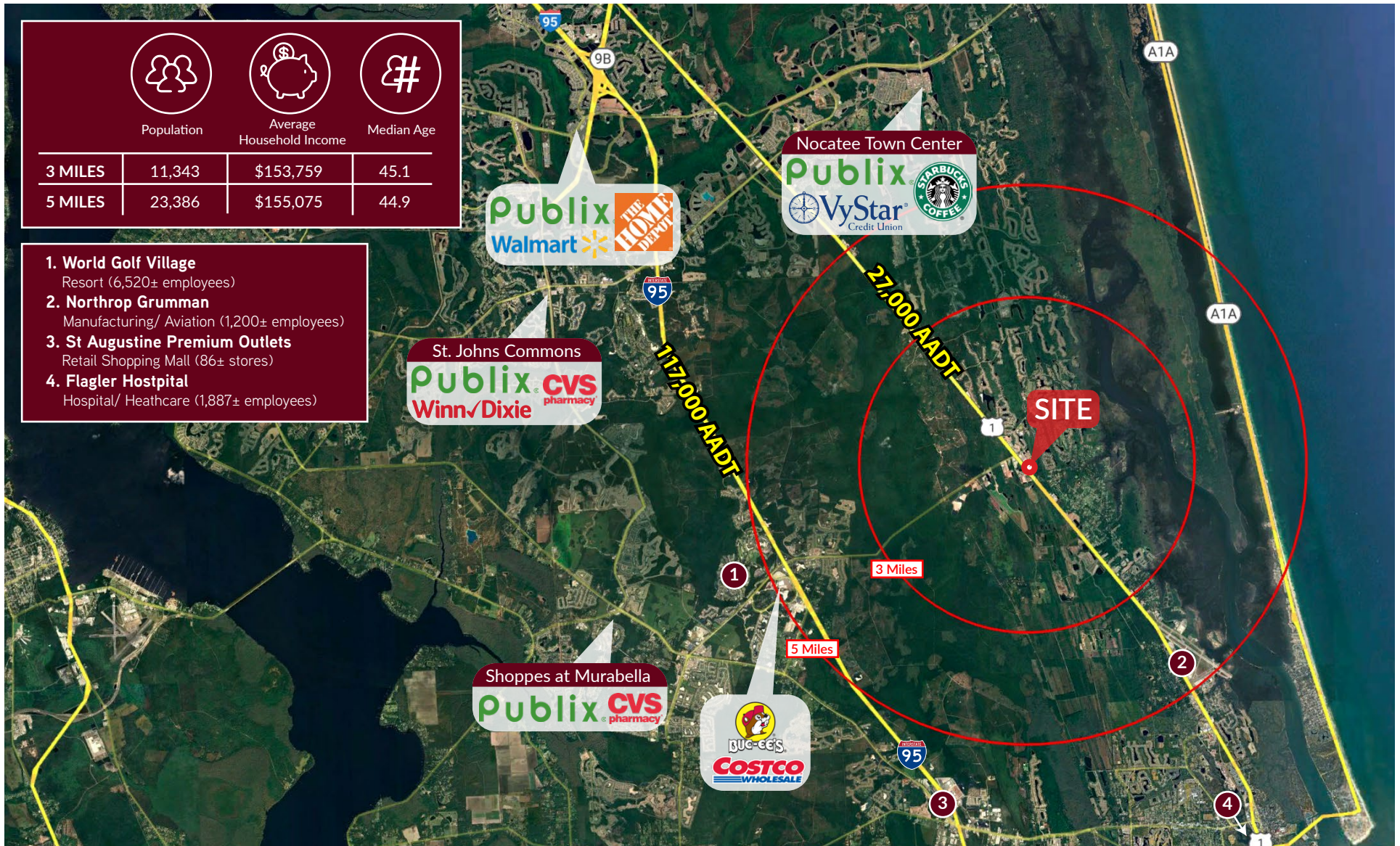
7440 US-1 N | St. Augustine, FL 32095

JACK SLADICK
D - 904.302.6944
C - 239.248.1652
jack@cantrellmorgan.com

KAYLA DEGUZMAN
D - 904.302.6930
M - 904.208.1168
kayla@cantrellmorgan.com



DEMOGRAPHICS & AREA OVERVIEW



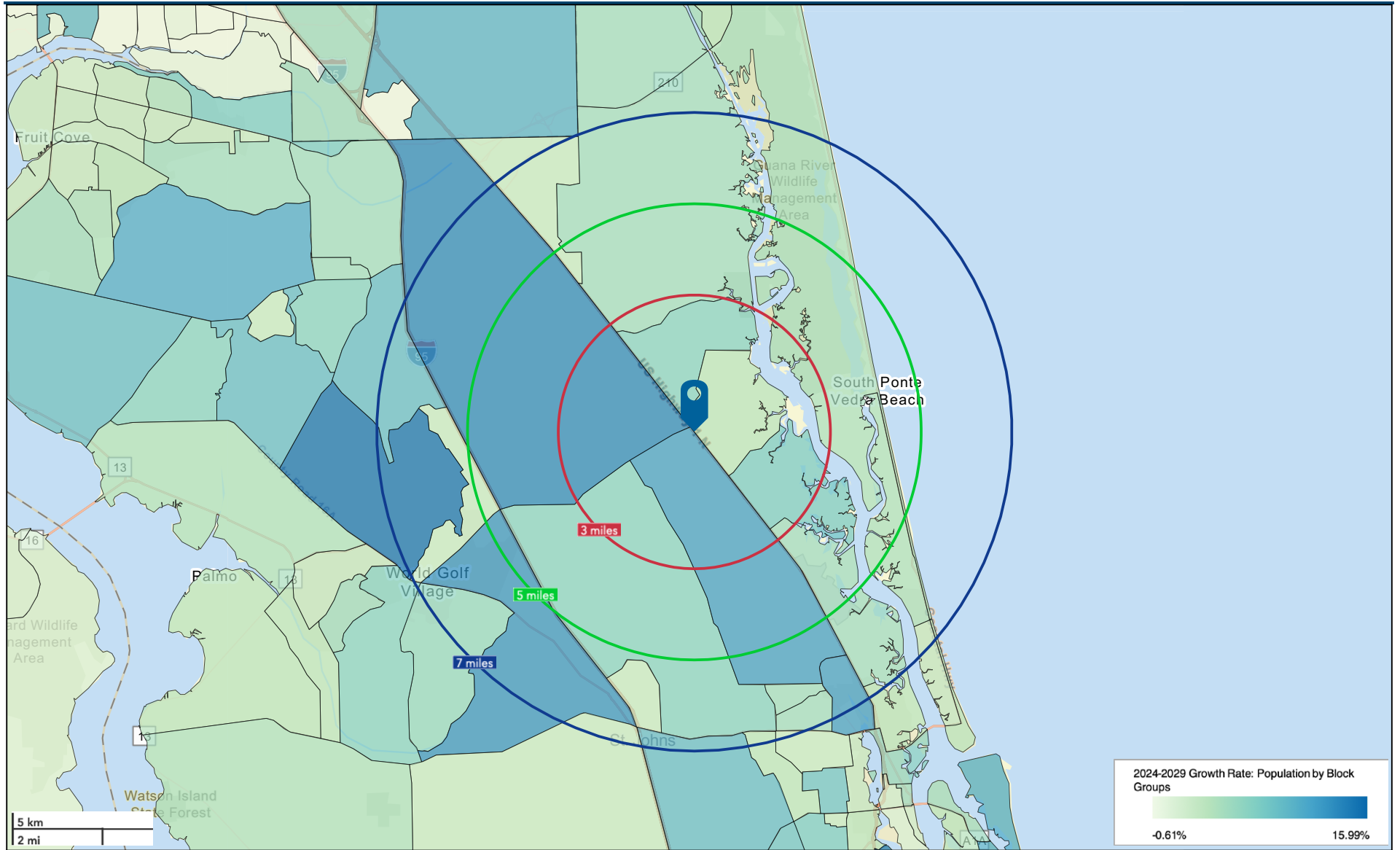
7440 US-1 N | St. Augustine, FL 32095

JACK SLADICK
D - 904.302.6944
C - 239.248.1652
jack@cantrellmorgan.com

KAYLA DEGUZMAN
D - 904.302.6930
M - 904.208.1168
kayla@cantrellmorgan.com



POPULATION GROWTH MAP



7440 US-1 N | St. Augustine, FL 32095

JACK SLADICK
D - 904.302.6944
C - 239.248.1652
jack@cantrellmorgan.com

KAYLA DEGUZMAN
D - 904.302.6930
M - 904.208.1168
kayla@cantrellmorgan.com

