



FLEMING ISLAND MEDICAL PLAZA | FOR LEASE

1675 Eagle Harbor Pkwy
Fleming Island, FL 32003

KAYLA DEGUZMAN
D - 904.302.6930
M - 904.208.1168
kayla@cantrellmorgan.com



PROPERTY OVERVIEW

Fleming Island Medical Plaza is a six-building medical campus located in rapidly-growing Fleming Island, and is home to many well-known medical facilities including First Coast Cardiovascular Institute, Pediatric Care Center, Fleming Plastic Surgery, SimonMed Imaging and Physicians Group Services.

Currently available in this building is the former Brooks Rehabilitation suite, offering 4,620 SF of move in ready medical office space. Enter into a gorgeous reception/waiting area before heading on back into an open medical space surrounded by private perimeter exam rooms.

PROPERTY HIGHLIGHTS

- Move in ready medical space
- 40,000 SF medical campus in Fleming Island
- Conveniently located on US-17
- Ample parking
- Building and monument signage available
- Located near brand new Baptist & Wolfson Emergency Medical Center

OFFERING SUMMARY

Available SF:	4,620 SF
Year Built:	2002
Market:	Fleming Island
Submarket:	Eagle Harbor



1675 Eagle Harbor Pkwy | Fleming Island, FL 32003

KAYLA DEGUZMAN
D - 904.302.6930
M - 904.208.1168
kayla@cantrellmorgan.com



FLEMING ISLAND MEDICAL PLAZA

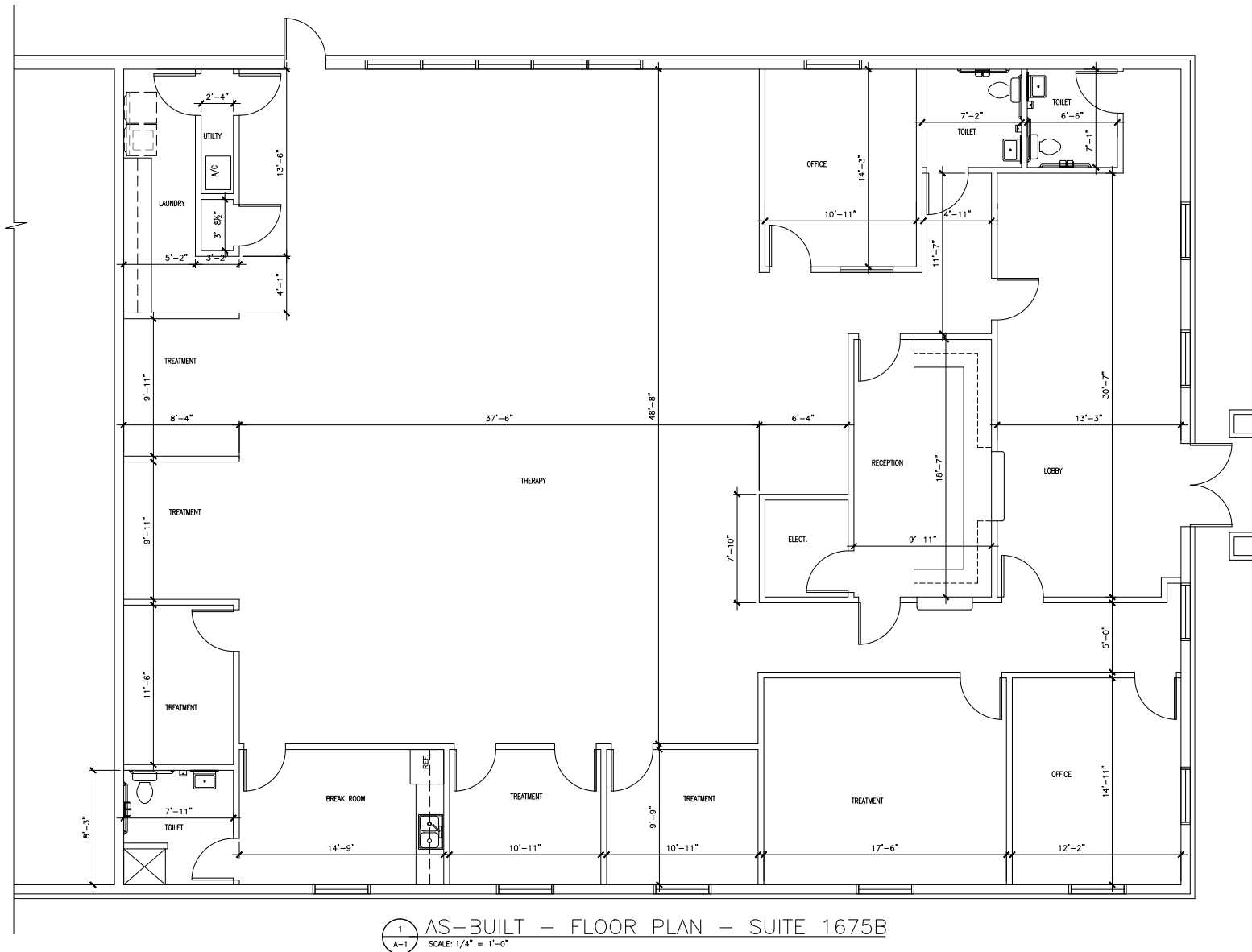


1675 Eagle Harbor Pkwy | Fleming Island, FL 32003

KAYLA DEGUZMAN
D - 904.302.6930
M - 904.208.1168
kayla@cantrellmorgan.com



FLOOR PLAN | 1675 SUITE B



1675 Eagle Harbor Pkwy | Fleming Island, FL 32003

KAYLA DEGUZMAN
D - 904.302.6930
M - 904.208.1168
kayla@cantrellmorgan.com



RETAILER MAP



1675 Eagle Harbor Pkwy | Fleming Island, FL 32003

KAYLA DEGUZMAN
 D - 904.302.6930
 M - 904.208.1168
 kayla@cantrellmorgan.com

